

THE MOSCONE CENTER

NORTH & SOUTH HALLS

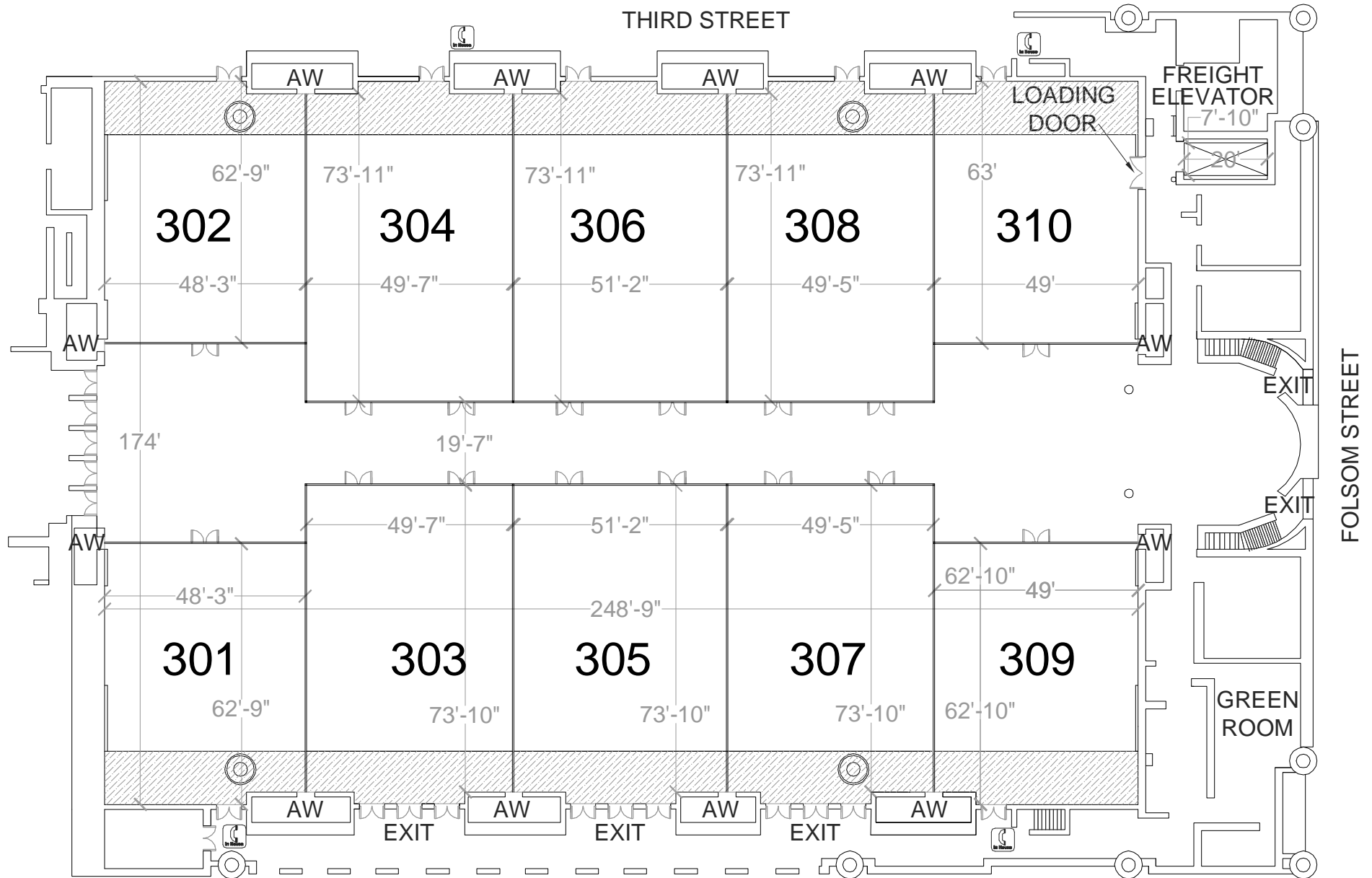
AGGREGATE SET

FLOOR PLANS & UTILITY PLANS

Every effort has been made to ensure the accuracy of all information contained on this floorplan, however no warranties, either expressed or implied, are made with respect to the plan. If the location of building columns, utilities or other architectural components of the facility is a consideration in the use of the space, it is the sole responsibility of the user to physically inspect the facility to verify all dimensions and locations.

TABLE OF CONTENTS

ESPLANADE BALLROOM FLOOR PLAN.....	1
ESPLANADE BALLROOM UTILITY PLAN.....	2
NORTH EXHIBIT HALL LOBBY FLOOR PLAN.....	3
SOUTH EXHIBIT HALL LOBBY FLOOR PLAN	4
NORTH LOBBY STREET LEVEL FLOOR PLAN.....	5
SOUTH LOBBY STREET LEVEL FLOOR PLAN	6
NORTH & SOUTH LOBBY STREET LEVEL FLOOR PLAN.....	7
EAST MEZZANINE FLOOR PLAN.....	8
WEST MEZZANINE FLOOR PLAN.....	9
EAST & WEST MEZZANINE FLOOR PLAN	10
NORTH EXHIBIT HALL D FLOOR PLAN.....	11
NORTH EXHIBIT HALL D UTILITY PLAN.....	12
SOUTH EXHIBIT HALLS A, B & C FLOOR PLAN.....	13
SOUTH EXHIBIT HALLS A, B & C UTILITY PLAN	14
SOUTH HALL FLOOR PLAN.....	15
SOUTH HALL UTILITY PLAN	16
NORTH EXHIBIT HALL E FLOOR PLAN.....	17
NORTH EXHIBIT HALL E UTILITY PLAN.....	18
NORTH MEETING SPACE FLOOR PLAN (ROOMS 110-125).....	19
GATEWAY BALLROOM FLOOR PLAN.....	20
GATEWAY BALLROOM UTILITY PLAN.....	21
ROOMS 100 & 101 SOUTH SWING SPACE FLOOR PLAN.....	22
ROOMS 100 & 101 SOUTH SWING SPACE UTILITY PLAN.....	23
ROOMS 105 & 106 SOUTH SWING SPACE FLOOR PLAN.....	24
ROOMS 105 & 106 SOUTH SWING SPACE UTILITY PLAN.....	25

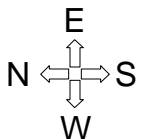


CEILING HEIGHT = 28'

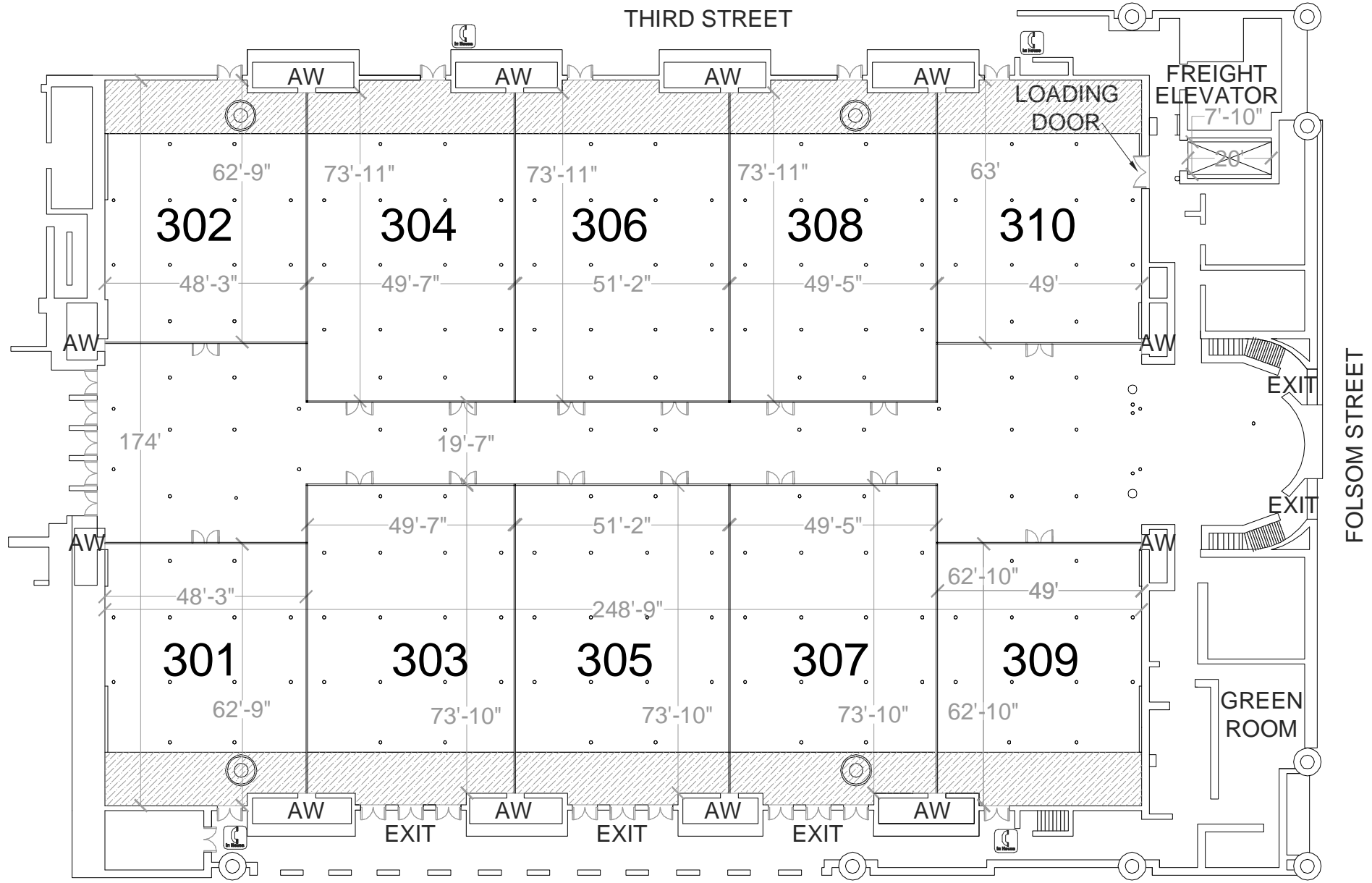
☐ DENOTES SOFFIT
HEIGHT AT SOFFIT = 22'9"

LOADING DOOR
7'2" WIDE OPENING.
7'7" WIDE TO JAMB.
7'10" HIGH.

FREIGHT ELEVATOR
20' LONG
7'10" WIDE
7'10" HIGH



ESPLANADE BALLROOM FLOOR PLAN



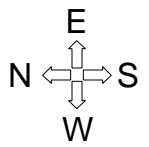
CEILING HEIGHT = 28'

☐ DENOTES SOFFIT
HEIGHT AT SOFFIT = 22'9"

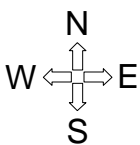
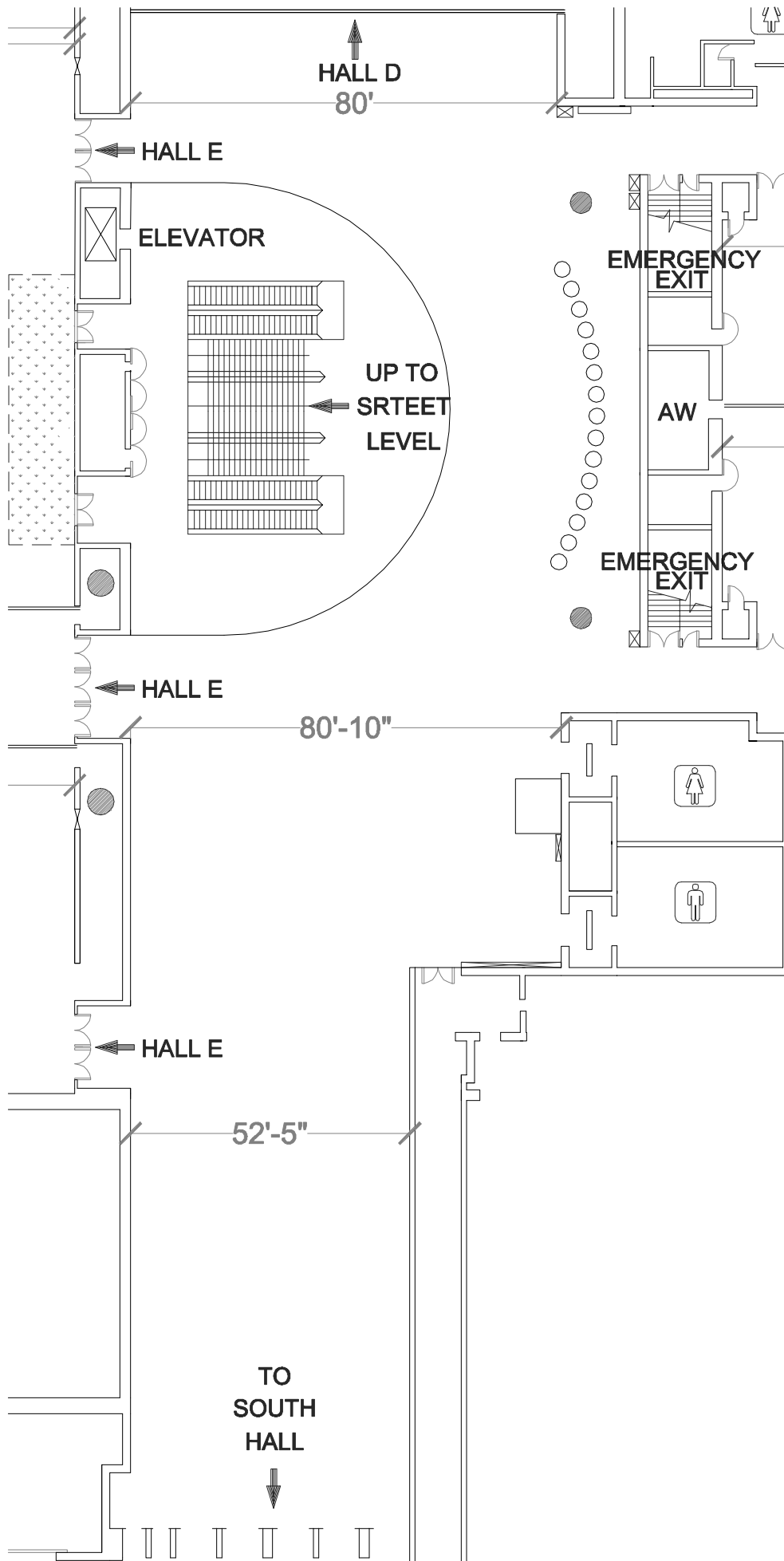
RIGGING NOTES:
○ DENOTES HANG POINT

LOADING DOOR
7'2" WIDE OPENING.
7'7" WIDE TO JAMB.
7'10" HIGH.

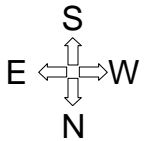
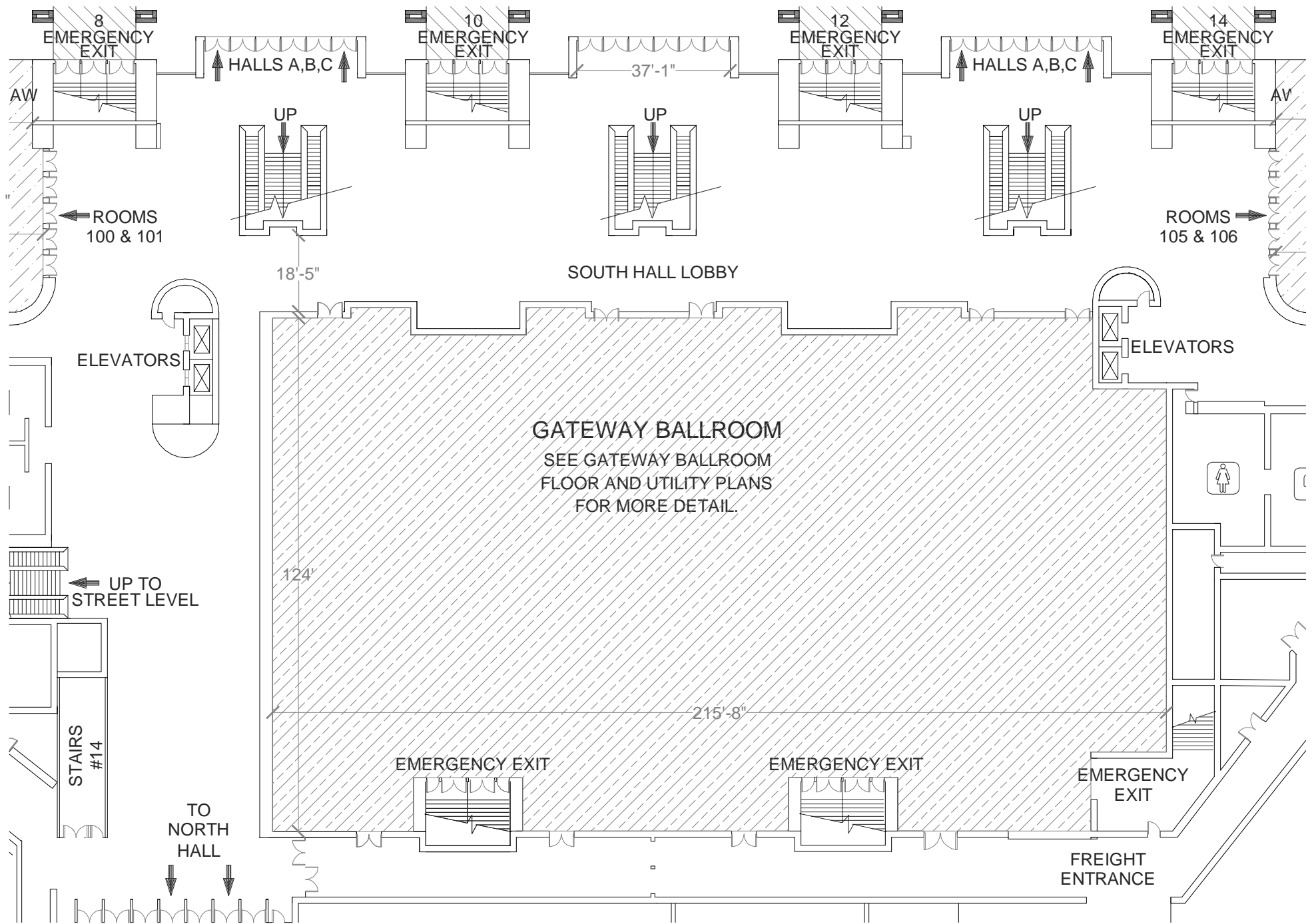
FREIGHT ELEVATOR
20' LONG
7'10" WIDE
7'10" HIGH



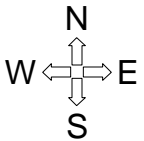
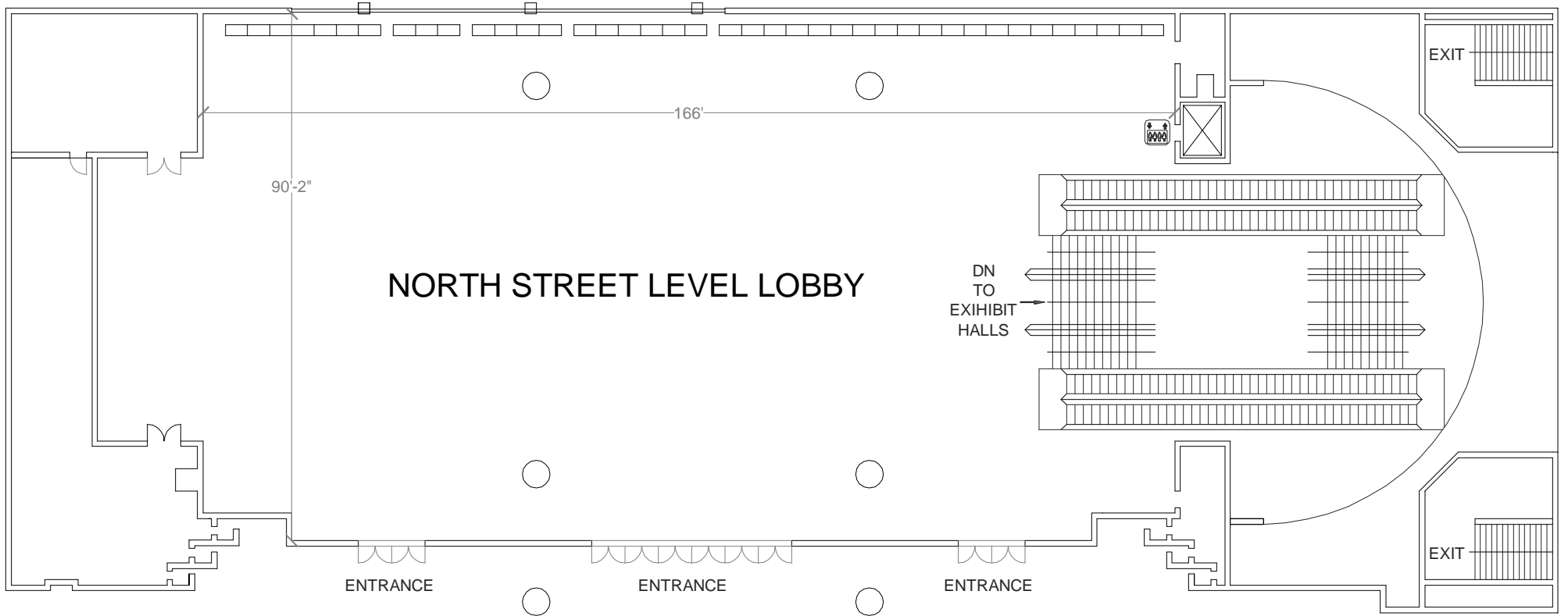
ESPLANADE BALLROOM UTILITY PLAN



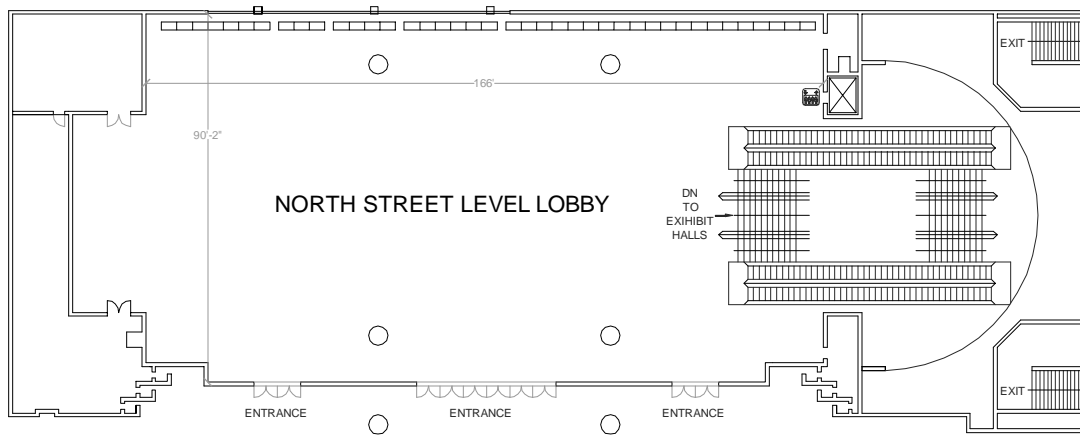
NORTH EXHIBIT HALL LOBBY FLOOR PLAN



SOUTH EXHIBIT HALL LOBBY FLOOR PLAN



NORTH LOBBY STREET LEVEL FLOOR PLAN



NORTH STREET LEVEL LOBBY

DN TO EXHIBIT HALLS

ENTRANCE

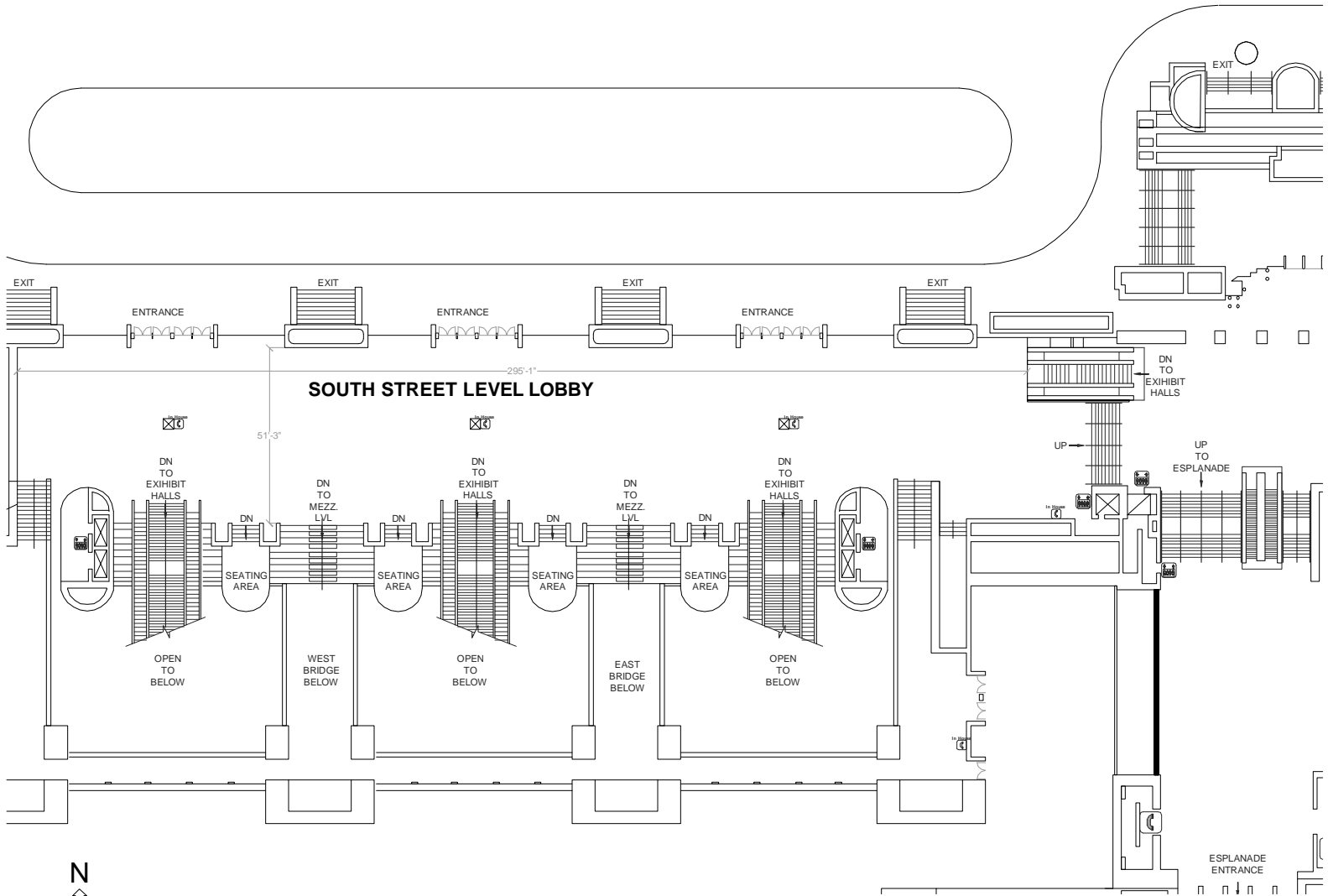
ENTRANCE

ENTRANCE

EXIT

EXIT

HOWARD STREET



SOUTH STREET LEVEL LOBBY

ENTRANCE

ENTRANCE

ENTRANCE

DN TO EXHIBIT HALLS

DN TO MEZZ LVL

DN TO EXHIBIT HALLS

DN TO MEZZ LVL

DN TO EXHIBIT HALLS

OPEN TO BELOW

SEATING AREA

WEST BRIDGE BELOW

OPEN TO BELOW

SEATING AREA

EAST BRIDGE BELOW

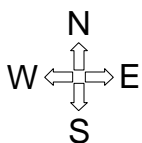
OPEN TO BELOW

DN TO EXHIBIT HALLS

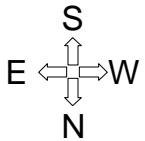
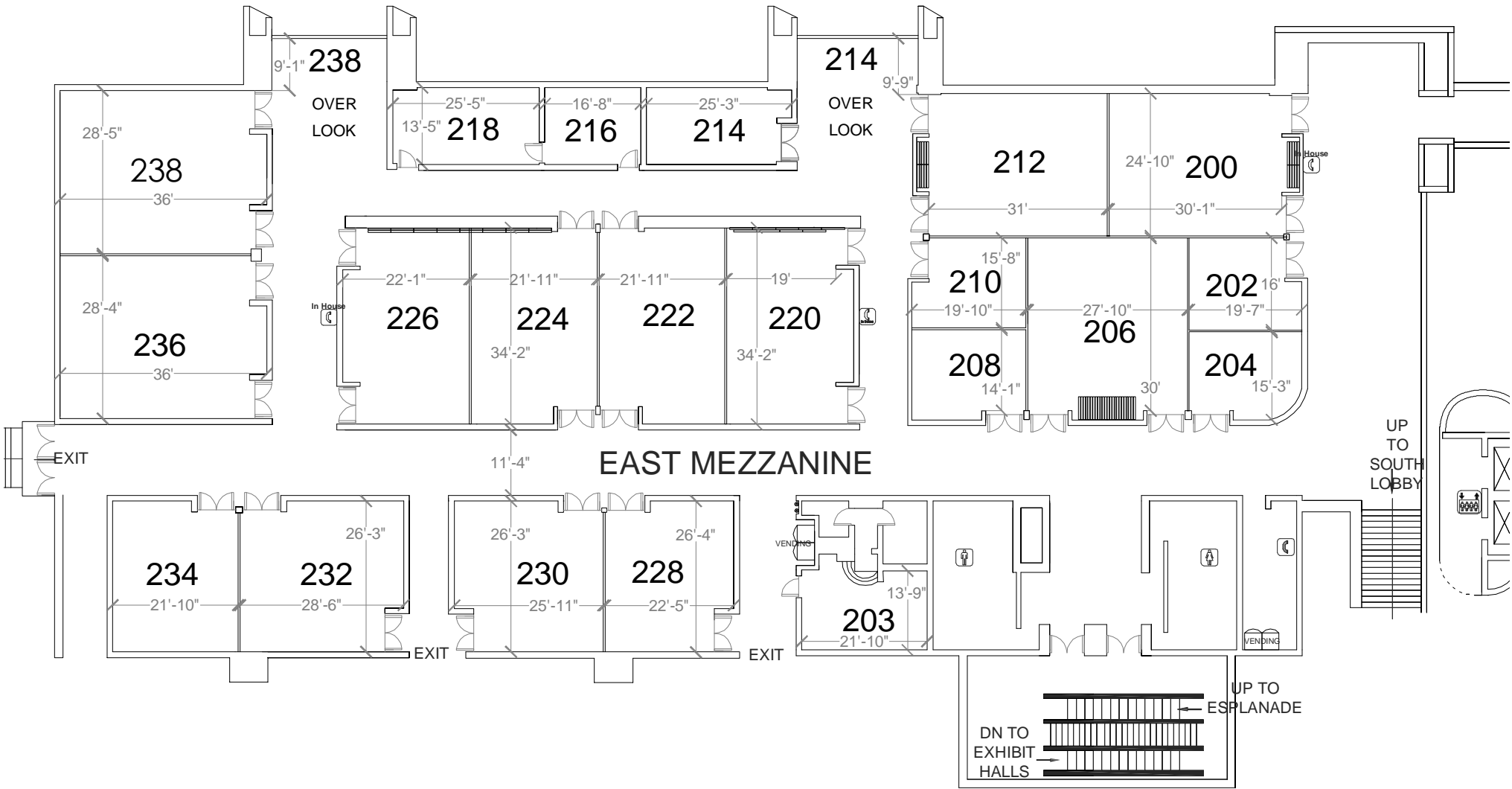
UP

UP TO ESPLANADE

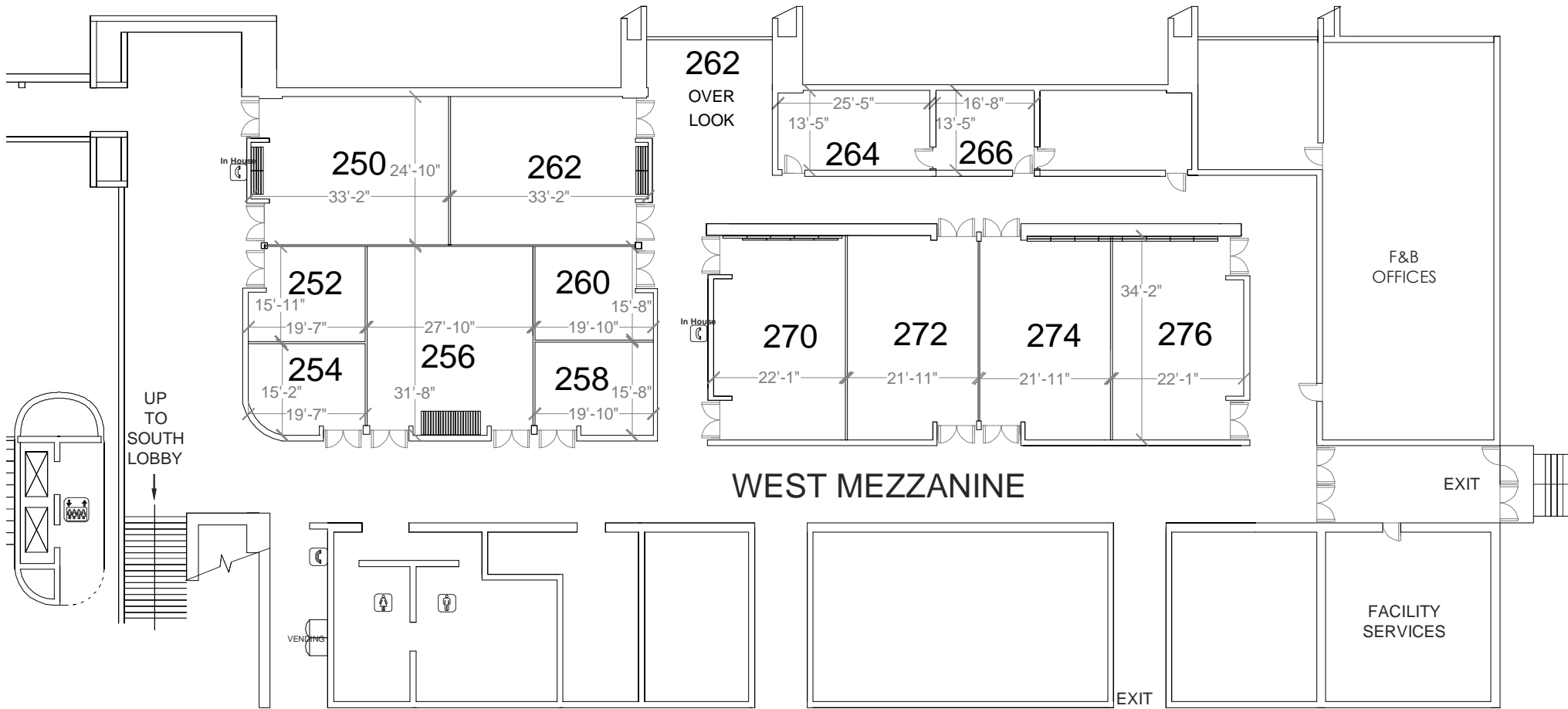
ESPLANADE ENTRANCE



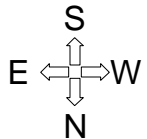
NORTH & SOUTH LOBBY STREET LEVEL FLOOR PLAN



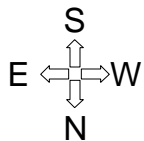
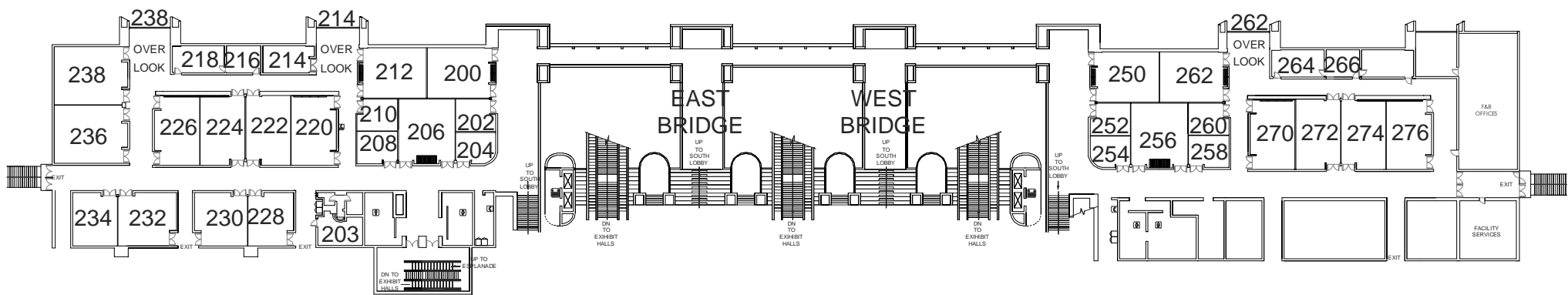
EAST MEZZANINE FLOOR PLAN



WEST MEZZANINE



WEST MEZZANINE FLOOR PLAN



EAST & WEST MEZZANINE FLOOR PLAN

MISSION STREET

← LOADING TRAFFIC

← LOADING TRAFFIC

← LOADING TRAFFIC

EMERGENCY EXIT

FREIGHT ENTRANCE
14' WIDE X 18' HIGH
ALLEY #8

FREIGHT ENTRANCE
14' WIDE X 18' HIGH
ALLEY #7

EXIT

EXIT

CONCESSIONS

EXIT

EXIT

FREIGHT ENTRANCE
14' WIDE X 18' HIGH
ALLEY #6

EXIT

EXIT

FREIGHT ENTRANCE
14' WIDE X 18' HIGH
ALLEY #5

EXIT

EXIT

EMERGENCY EXIT

EXIT

EXIT

← LOADING TRAFFIC

LOADING TRAFFIC →

FOURTH STREET

FREIGHT ENTRANCE
56' WIDE X 14.5' HIGH

EXIT

EXIT

AW



520'

264'-11"

COLUMN

HALL D

THIRD STREET

FREIGHT ENTRANCE
56' WIDE X 14.5' HIGH

EXIT

EXIT

↑

91'-1"

200'-4"

89'-4"

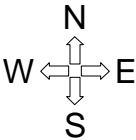
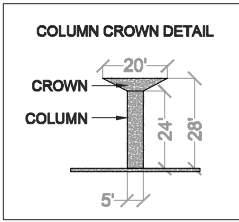
80'

HALL D

309'-1"

FIRST AID

EXIT

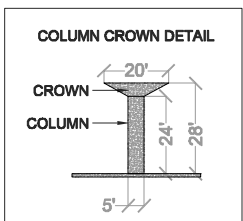
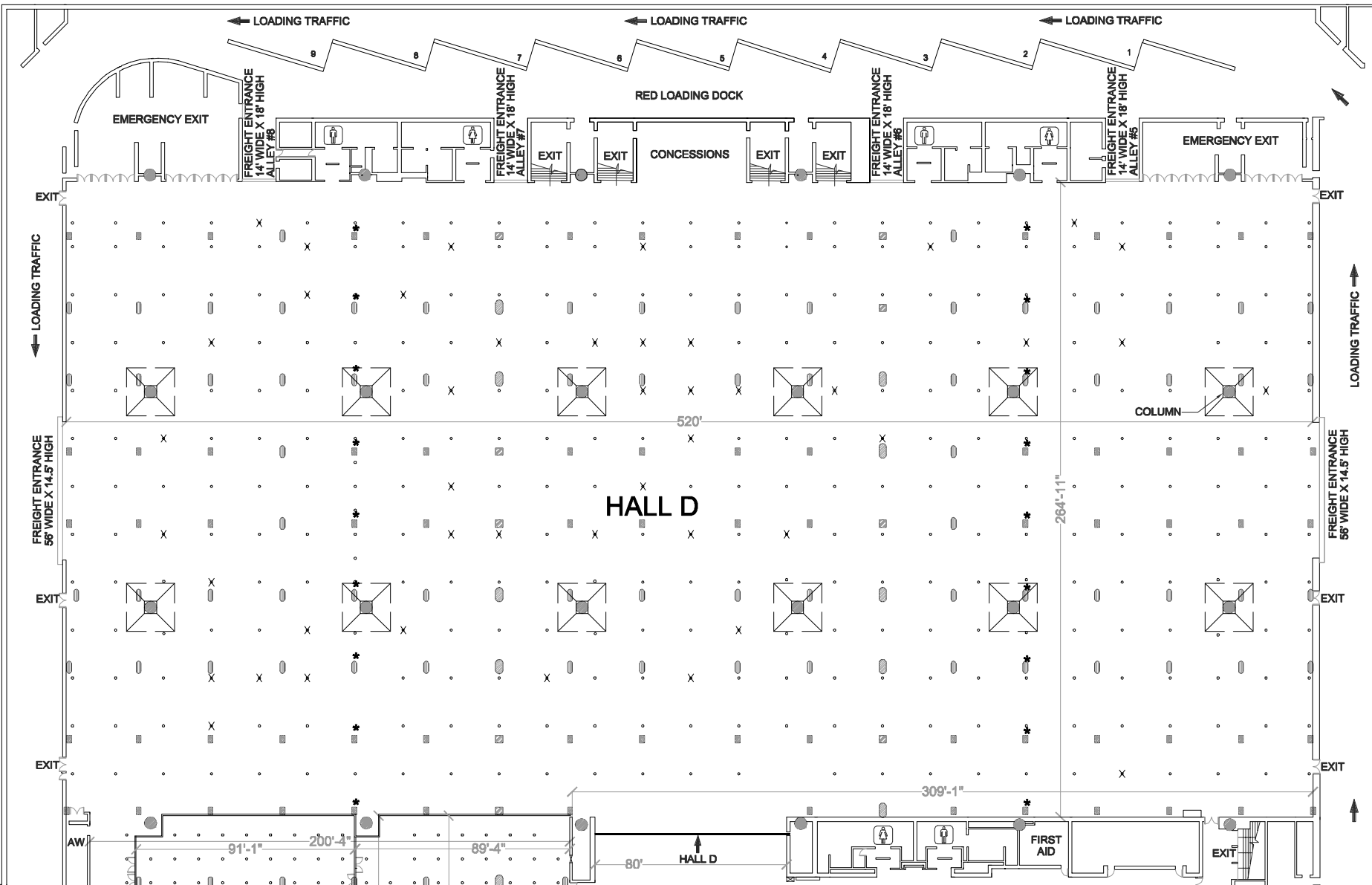


NORTH EXHIBIT HALL FLOOR PLAN

MISSION STREET

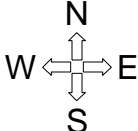
FOURTH STREET

THIRD STREET



ELECTRICAL KEY	
■	TYPE A - 60amp, PHONE
▣	TYPE B - 60amp, PHONE, DUCT JUNCTION
○	TYPE C - 60amp, PHONE, WATER, AIR, DRAIN
⊖	TYPE D - 60amp, PHONE, DUCT JUNCTION, WATER
★	DENOTES 100amp POWER

- RIGGING NOTES:**
- DENOTES HANG POINTS
 - ⊗ DENOTES NO BRIDLE HANG POINTS
 - ⊠ DENOTES CABLE TIE-BACKS THESE ARE NOT HANG POINTS

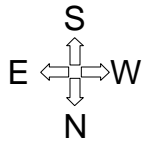
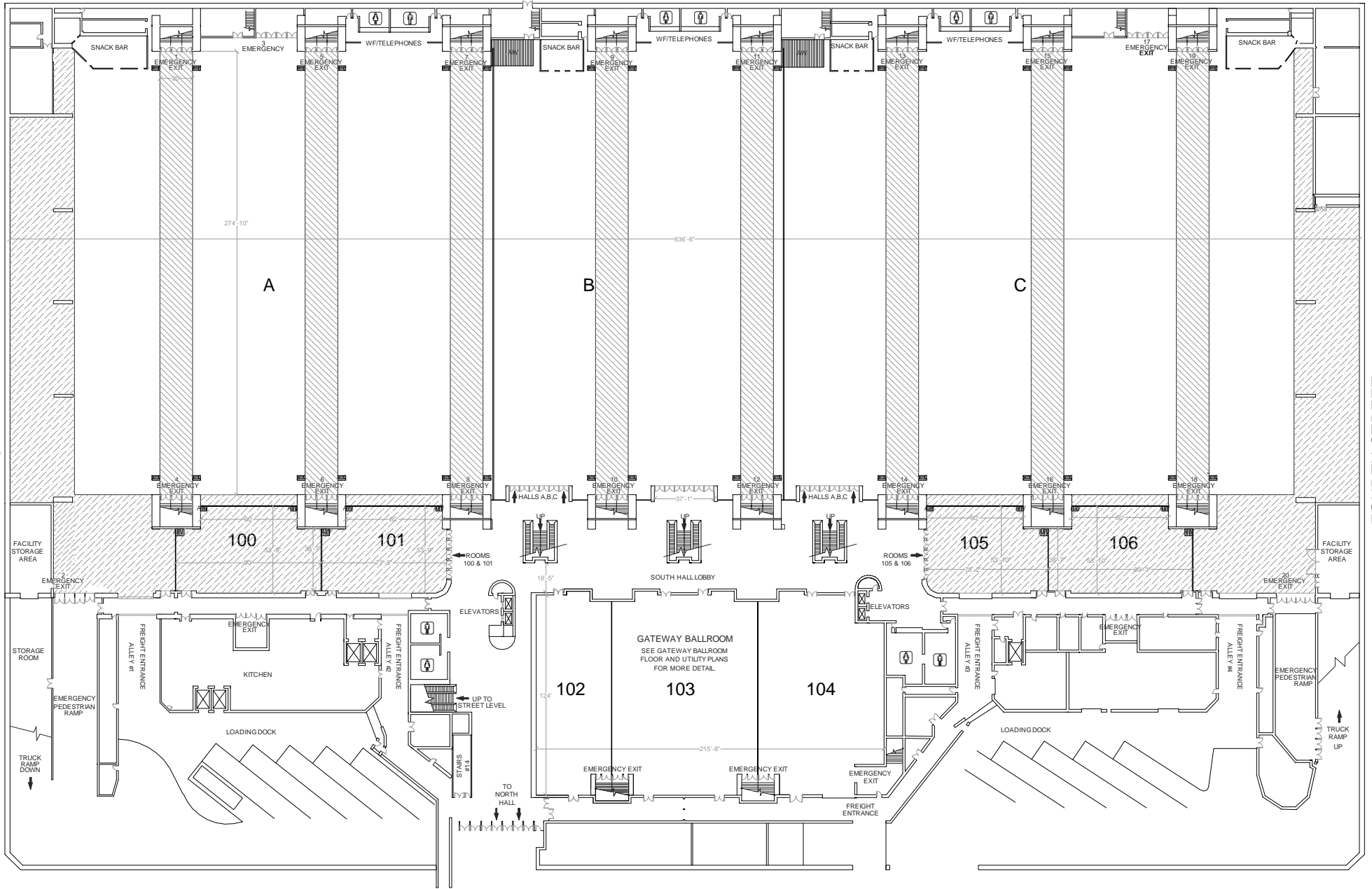


NORTH EXHIBIT HALL UTILITY PLAN

FOLSOM STREET

THIRD STREET

FOURTH STREET

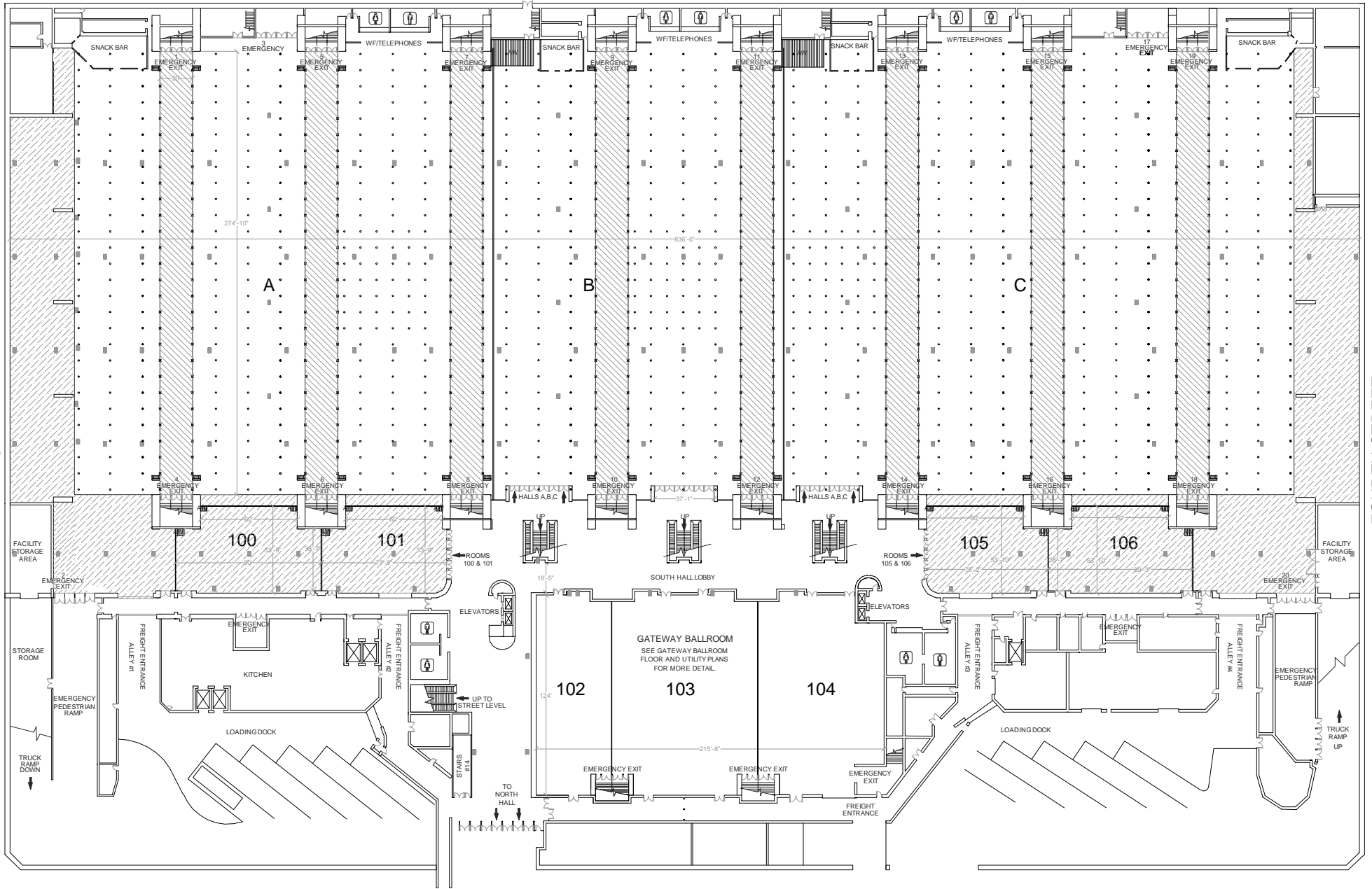


SOUTH HALL FLOOR PLAN

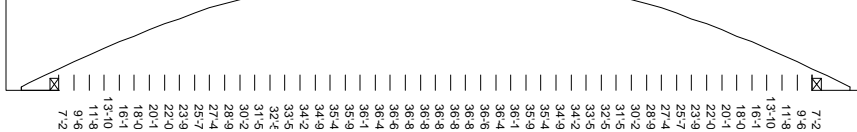
FOLSOM STREET

THIRD STREET

FOURTH STREET



SECTION DETAIL OF ARCH
GEOMETRY HEIGHTS



CEILING HEIGHT NOTES:

SHADED AREA DENOTES CEILING HEIGHT OF 16' OR LESS.

SHADED AREA DENOTES ARCHES IN CEILING. SEE SECTION DETAIL FOR HEIGHT CLEARANCE UNDER ARCHES.

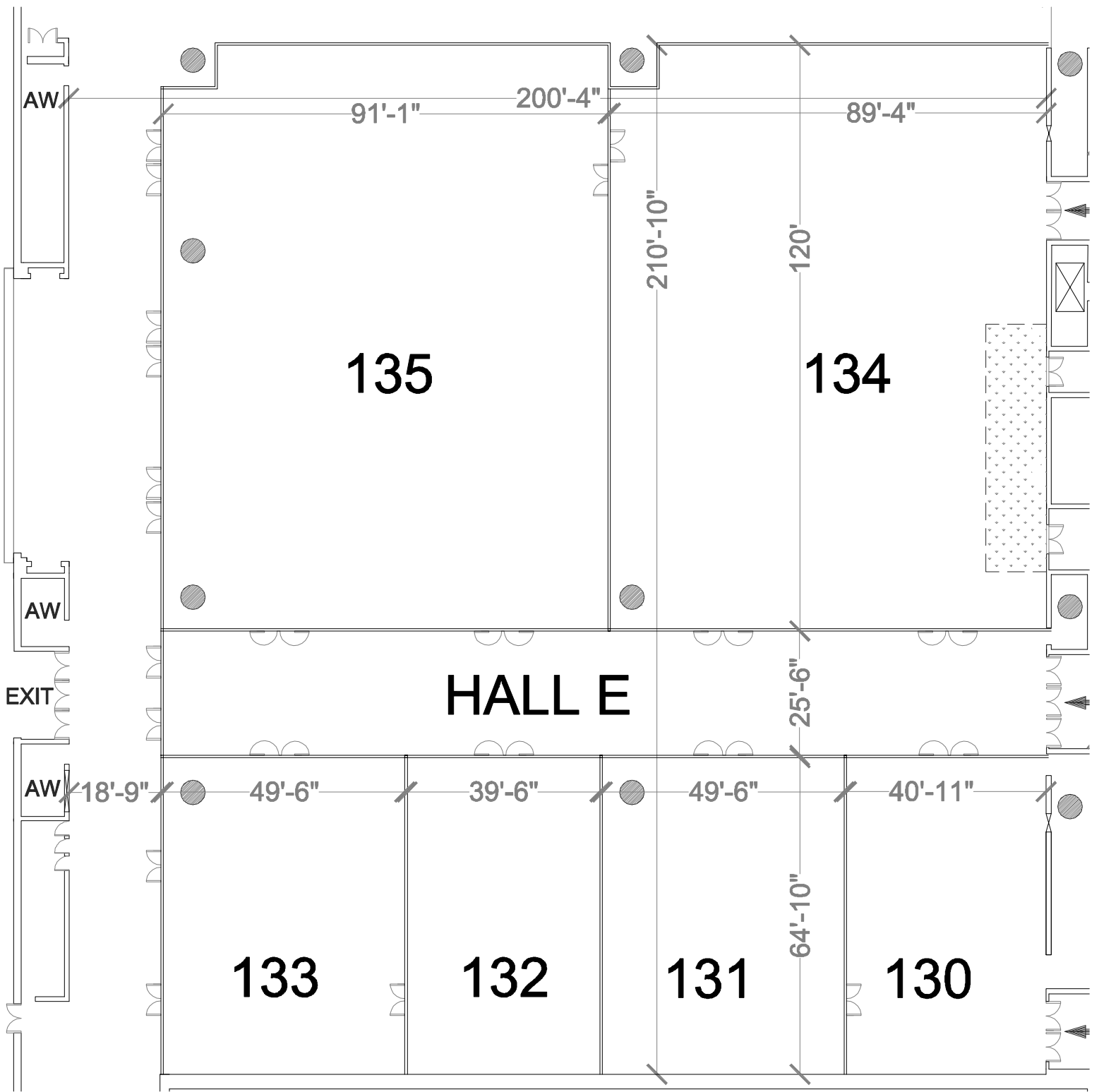
RIGGING NOTES:

○ DENOTES HANG POINTS
× DENOTES HANG POINTS LOCATED ON ARCHES

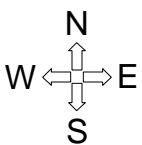
UTILITY NOTES:

■ DENOTES UTILITY FLOOR PORT.
▣ DENOTES P.E.R.S. AND FIRE HOSE.

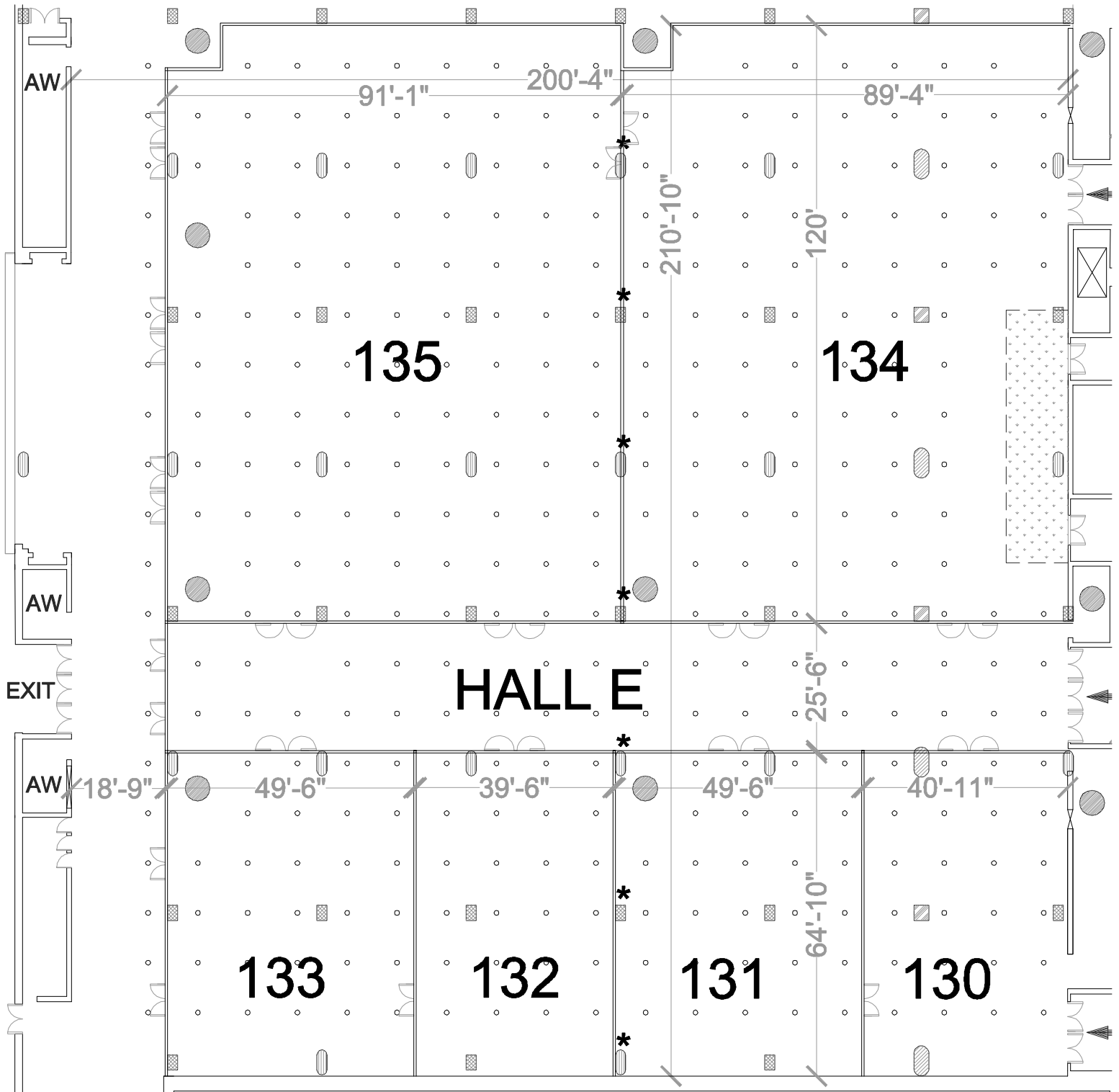
SOUTH HALL UTILITY PLAN



SHADED AREA IN HALL E
DENOTES ANGLED CEILING

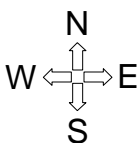


NORTH EXHIBIT HALL E FLOOR PLAN



RIGGING NOTES:

- DENOTES HANG POINTS
- ⊗ DENOTES NO BRIDLE HANG POINTS
- ⊠ DENOTES CABLE TIE-BACKS THESE ARE NOT HANG POINTS



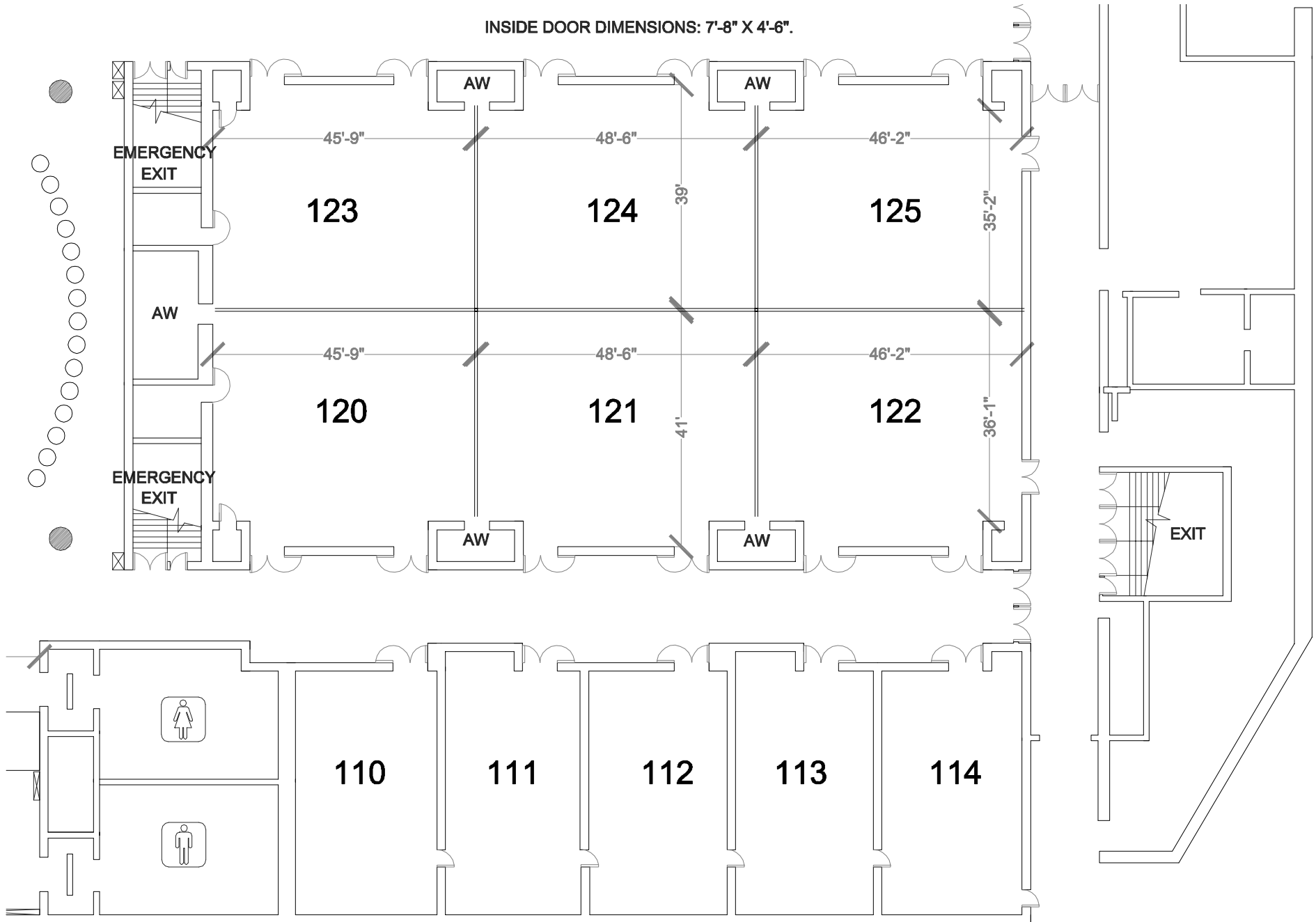
SHADED AREA IN HALL E DENOTES ANGLED CEILING

ELECTRICAL KEY

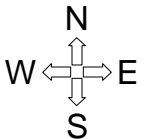
- ▣ TYPE A - 60amp, PHONE
- ▤ TYPE B - 60amp, PHONE, DUCT JUNCTION
- ▥ TYPE C - 60amp, PHONE, WATER, AIR, DRAIN
- ▦ TYPE D - 60amp, PHONE, DUCT JUNCTION, WATER
- * DENOTES 100amp POWER

NORTH EXHIBIT HALL E UTILITY PLAN

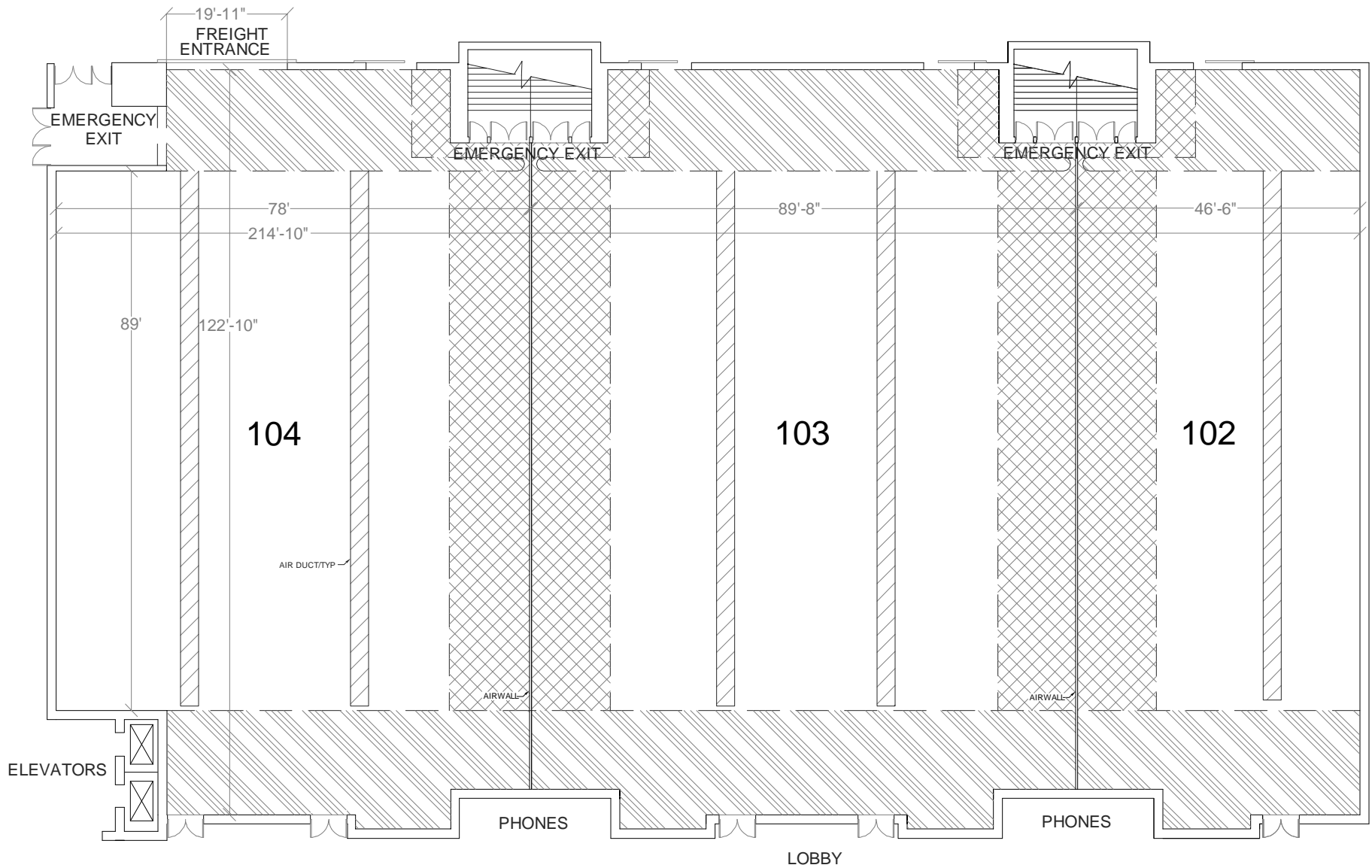
INSIDE DOOR DIMENSIONS: 7'-8" X 4'-6".



ROOMS 110-114 ARE 24'X42', NOMINAL.






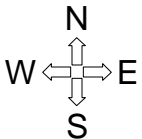
NORTH MEETING SPACE FLOOR PLAN



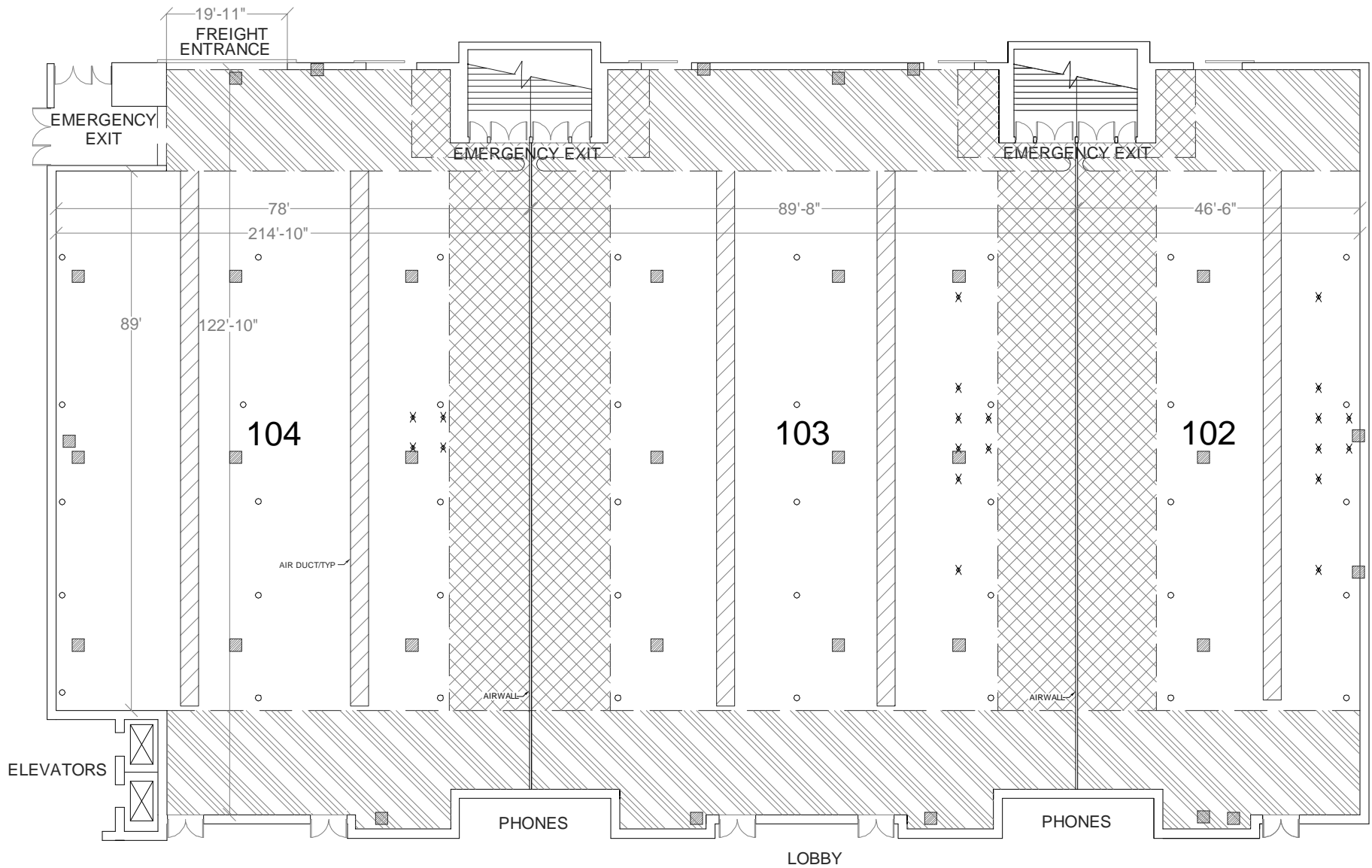
CEILING HEIGHT NOTES:

CEILING HEIGHT = 23'-7 1/2".

-  DENOTES CEILING HEIGHT OF 13'-11".
-  DENOTES CEILING HEIGHT OF 19'-4".
-  DENOTES CEILING HEIGHT OF 20'.






GATEWAY BALLROOM FLOOR PLAN



CEILING HEIGHT NOTES:

CEILING HEIGHT = 23'-7 1/2".

-  DENOTES CEILING HEIGHT OF 13'-11".
-  DENOTES CEILING HEIGHT OF 19'-4".
-  DENOTES CEILING HEIGHT OF 20'.

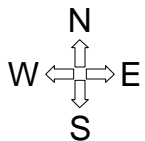
UTILITY NOTES:

 DENOTES UTILITY FLOOR PORT.

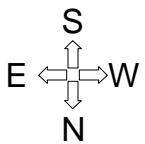
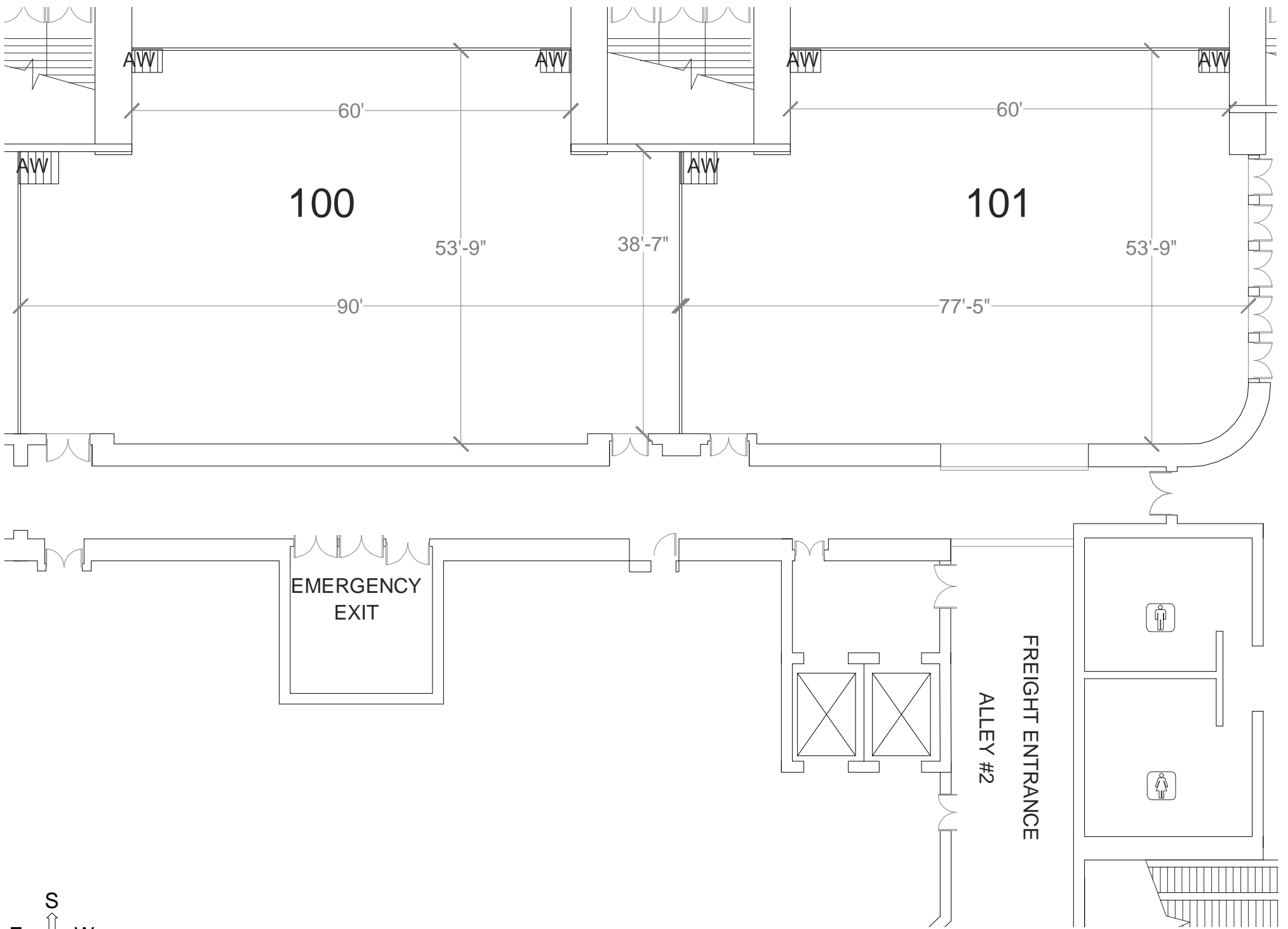
RIGGING NOTES:

 DENOTES HANG POINTS RATED AT 500 LBS.

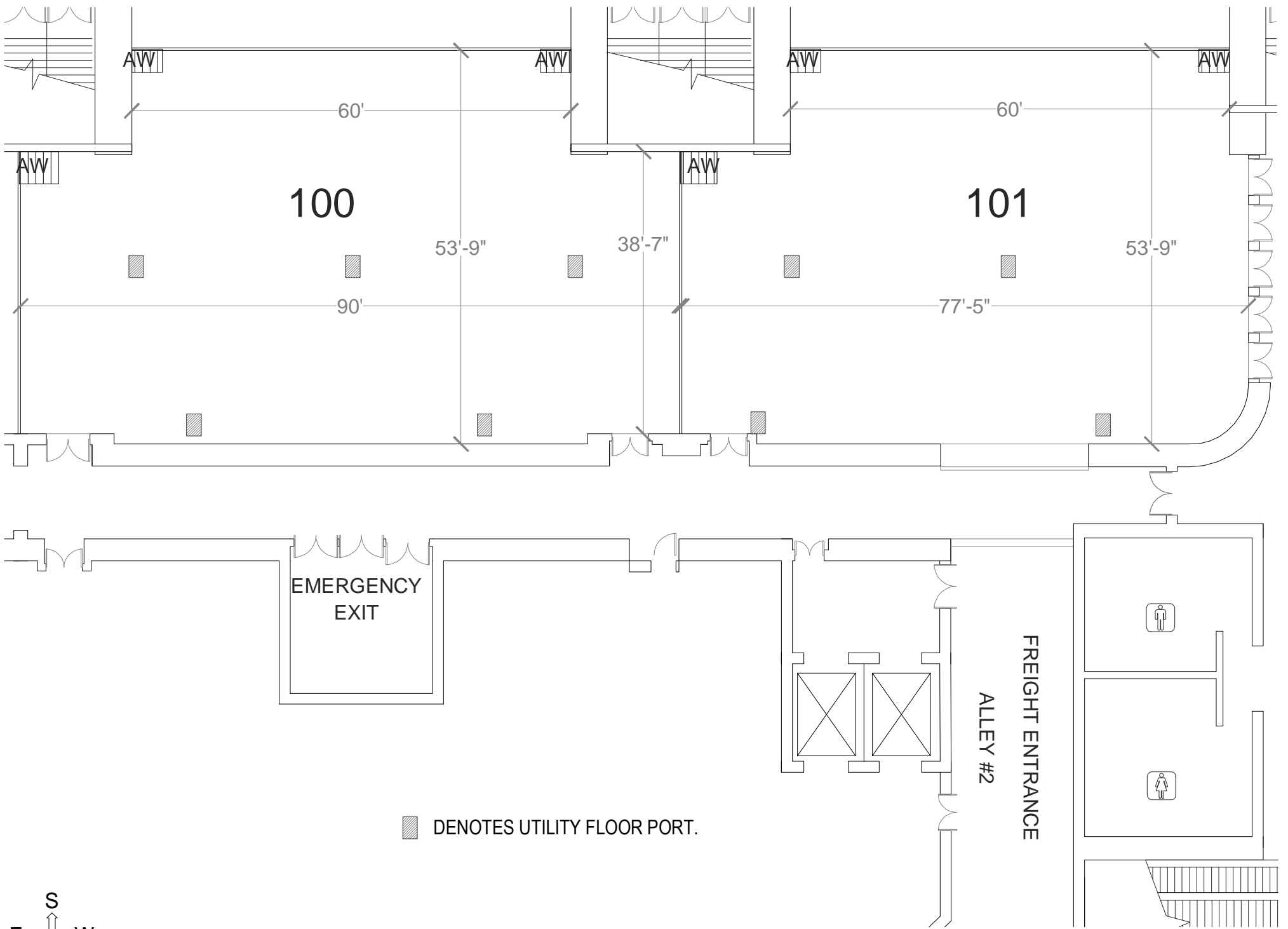
 DENOTES HANG POINTS RATED AT 50 LBS.



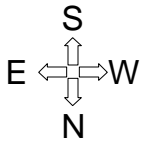
GATEWAY BALLROOM UTILITY PLAN



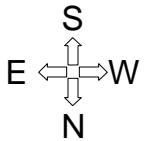
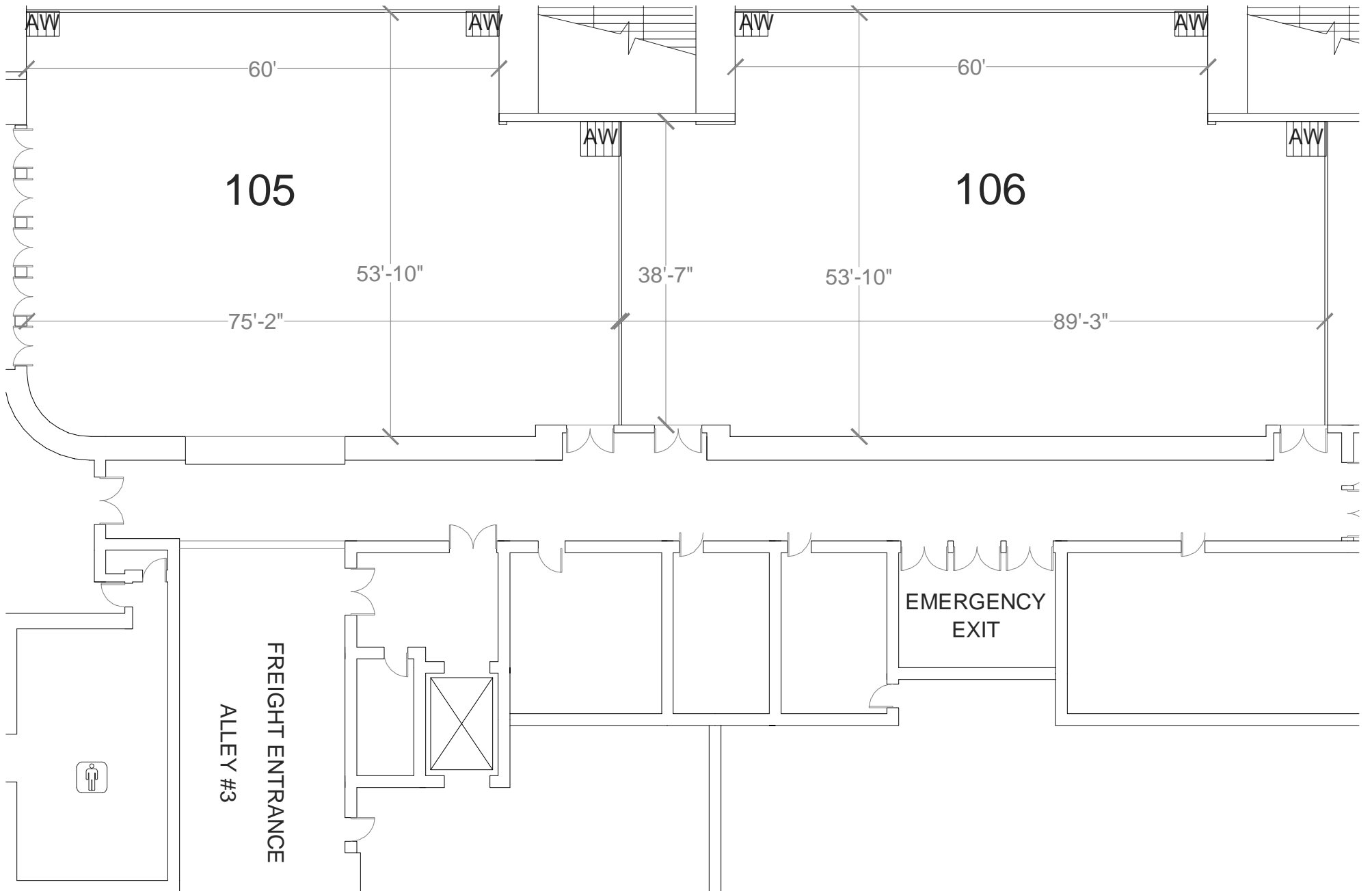
ROOMS 100 & 101 SOUTH SWING SPACE FLOOR PLAN



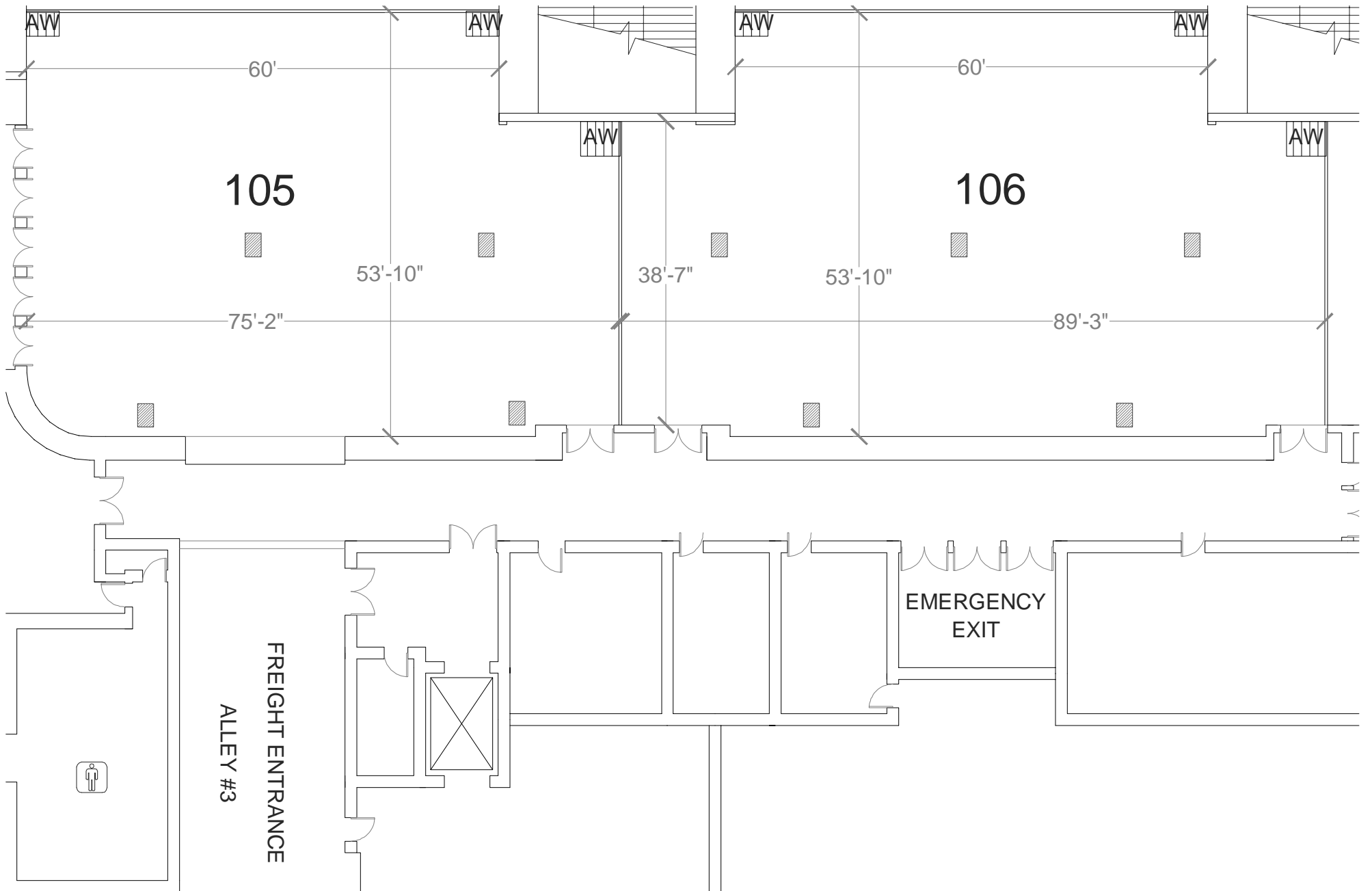
▨ DENOTES UTILITY FLOOR PORT.



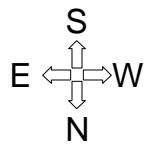
ROOMS 100 & 101 SOUTH SWING SPACE UTILITY PLAN



ROOMS 105 & 106 SOUTH SWING SPACE FLOOR PLAN



■ DENOTES UTILITY FLOOR PORT.



ROOMS 105 & 106 SOUTH SWING SPACE UTILITY PLAN